

DISNEY ASPIRE

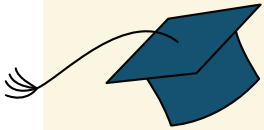
WELCOMES

FULLERTON COLLEGE
CALIFORNIA STATE UNIVERSITY, FULLERTON

WHAT YOU NEED TO KNOW

NEW ADDITIONS TO DISNEY ASPIRE

Disney Aspire is welcoming new schools to its ever-growing network: **Fullerton College** and **Cal State Fullerton**. If you're an eligible employee or cast member who lives in the state of California,* you can soon explore these exciting new options to put your educational and career **#DreamsWithinReach**.



Together, we anticipate these new additions to Disney Aspire will bring nearly **70 new programs and offerings** to our growing network.

Beginning
AUG. 9, 2022

Eligible employees* may apply to **Fullerton College** through Disney Aspire

Pro Tip: The application deadline for the Fall 2022 term is **Aug. 15, 2022** — shortly after applications open! You're encouraged to explore the list of available programs in advance to expedite the application process once it opens on Aug. 9.

?

Are you already enrolled at Fullerton College? Keep reading to explore how you may be eligible to re-enroll for your program through Disney Aspire so your future terms are 100% paid for.

Coming
FALL 2022

Eligible employees* may apply to **Cal State Fullerton** through Disney Aspire

?

Eager to apply to Cal State Fullerton? Stay tuned for more details as we get closer to fall, including a list of what programs from Cal State Fullerton will be included in the Disney Aspire network.

*In addition to being eligible for Disney Aspire (reference the eligibility guidelines on aspire.disney.com) to enroll in Fullerton College you must also be a resident of the state of California, defined as having lived in California for a minimum of 366 consecutive days, for those 19 years of age or older. Stay tuned for Cal State Fullerton residency requirements.

IN-NETWORK PROGRAM LIST

FULLERTON COLLEGE

Available in-network beginning Aug. 9, 2022

Associate Degree Programs

Accounting & Finance

- AA in Economics*

Business

- AS in Business Administration*

Communication

- AA in Communication Studies*

Education & Teaching

- AS in Early Childhood Education Associate*

Spanish Language

- AA Spanish*

Healthcare

- AS Pre-Nursing

Horticulture

- AA Nursery Management
- AS Landscape Management
- AS Ornamental Horticulture

Legal Studies & Public Policy

- AA Law, Public Policy, and Society*

Trades & Technical Programs

- AS Construction Inspection
- AS Construction Management
- AS Construction Technology
- AS Manufacturing Technology

Certificate Programs

Arts, Design, & Entertainment

- Theme Park Technician Certificate
- Theme Park Technology Specialist Certificate

Horticulture

- Landscape Irrigation Certificate
- Pest Management Certificate

Trades & Technical Programs

- Electro-Mechanical Technician Certificate
- Welding Technology Certificate

Language Learning

- English as a Second Language (ESL)

**Associate Degree Programs for Transfer: The Associate Degree Program for Transfer (ADT) is a specialized Associate Degree that provides students with coursework that aligns to the California State University system in a similar major. These degrees are different from the traditional Associate degrees (AA, AS) and are designated as AA-T and AS-T in the Fullerton College catalog. In addition, students are afforded specific advantages in the transfer admissions process.*

For more information, contact a Guild Education Coach.

ALREADY ENROLLED?

Are you eligible* for Disney Aspire and already enrolled at Fullerton College?

If you're already a student at Fullerton College, explore the in-network program list on the above page to see if your program is one that is now included in the **Disney Aspire** network. If so, you may be eligible to re-enroll through **Disney Aspire** to have the tuition for your program's future terms 100% paid for by The Walt Disney Company.

If the program you are currently enrolled in is now included in the Disney Aspire network:

1. Confirm you are eligible* for Disney Aspire.
2. If the program you're currently enrolled in is now included in the Disney Aspire network (see the in-network program list on the above page), you can re-enroll through Disney Aspire so your future terms are 100% paid for by The Walt Disney Company.
3. Typically, Disney Aspire participants must submit an application for Guild Education as well as their in-network university of choice. Because you are already enrolled at Fullerton College, you will get to skip the second step. You just need to apply through Guild Education.
4. Applications for Fullerton College open on Aug. 9, 2022. Mark your calendar so you are prepared to apply as soon as possible. Applications for the first term close soon after they open on Aug. 15, 2022. **You must re-apply for your program through Guild Education in order to participate in Disney Aspire.**
5. Once you are accepted, you are now officially part of Disney Aspire! Your program will be 100% paid for, effective with your next applicable term start date. You may also begin reimbursing applicable books and fees for applicable future terms.
6. Please note that Disney Aspire will not retroactively reimburse you for any previous enrollment, including tuition, books, and fees.
7. If you have any questions, please visit aspire.disney.com and click "Contact a Coach" to be connected to 1:1 coach who can walk you through the step-by-step process.

If the program you are currently enrolled in is not included in the Disney Aspire network:

If the program you're currently enrolled in at Fullerton College is not included in the Disney Aspire network, you're encouraged to connect with a Guild Education Coach to explore alternate in-network program options that may match your same career goals. You may be able to transfer into a program that is covered through Disney Aspire. Visit aspire.disney.com and click "Contact a Coach" to get started.

#DREAMS
WITHIN REACH[®]
DisneyAspire