

Part A

Apply glue to this tab here.

WINNIE



Disney
HOCUS
POCUS

D23
The Official Disney Fan Club

What you will need:

- 6 sheets of card stock
- Glue stick or tape
- Scissors

Instructions:

1. Print each popcorn box fit to page onto card stock and cut along the solid lines. Kids, please have a grown-up help you with the scissors. Each box will have two parts that will need to be glued together first before making the box.
2. Apply glue to the tab on Part A and align to the area indicated on Part B. When the glue has dried, fold along the dotted lines.
3. Apply glue to the remaining tab and secure to the open side of the box. Let the glue dry and then fold in the bottom flaps and secure with glue or tape.



Disney
HOCUS
POCUS

The Anniversary Edition of *Hocus Pocus* is here to put a spell on you! Watch this Halloween classic in two different ways (including Trivia and Treats Mode) today.

Part B

Apply glue to this tab to make the box.



Part A

Apply glue to this tab here.



SARAH



Disney
HOCUS
POCUS

D23
The Official Disney Fan Club

© Disney

What you will need:

- 6 sheets of card stock
- Glue stick or tape
- Scissors

Instructions:

1. Print each popcorn box fit to page onto card stock and cut along the solid lines. Kids, please have a grown-up help you with the scissors. Each box will have two parts that will need to be glued together first before making the box.
2. Apply glue to the tab on Part A and align to the area indicated on Part B. When the glue has dried, fold along the dotted lines.
3. Apply glue to the remaining tab and secure to the open side of the box. Let the glue dry and then fold in the bottom flaps and secure with glue or tape.



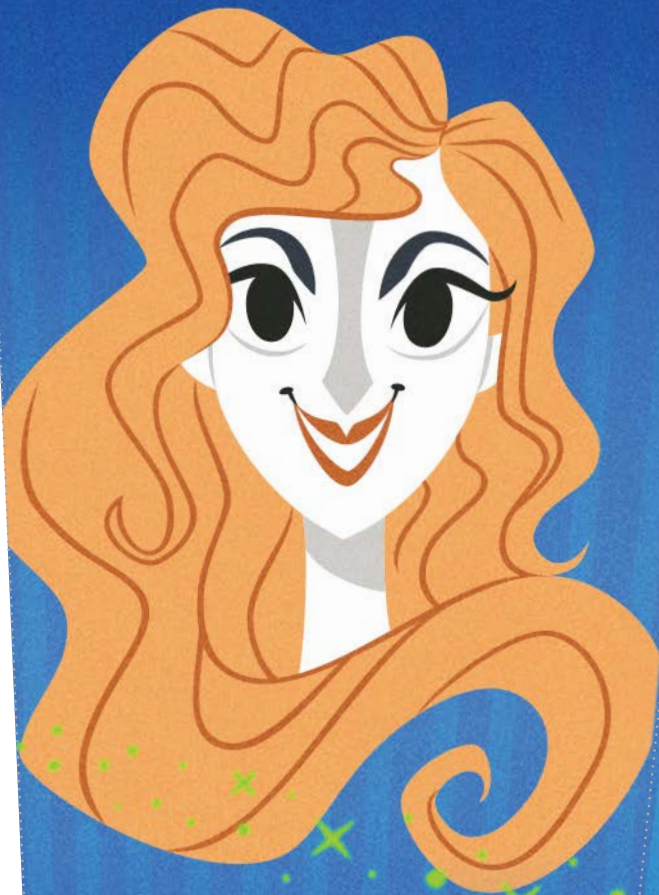
Disney
HOCUS
POCUS

The Anniversary Edition of *Hocus Pocus* is here to put a spell on you! Watch this Halloween classic in two different ways (including Trivia and Treats Mode) today.

© Disney

Part B

Apply glue to this tab to make the box.



SARAH

© Disney



Disney
HOCUS
POCUS

D23
The Official Disney Fan Club

Glue Part A to Part B Here



© Disney

Part A

Apply glue to this tab here.



Disney
**HOCUS
POCUS**

D23
The Official Disney Fan Club

What you will need:

- 6 sheets of card stock
- Glue stick or tape
- Scissors

Instructions:

1. Print each popcorn box fit to page onto card stock and cut along the solid lines. Kids, please have a grown-up help you with the scissors. Each box will have two parts that will need to be glued together first before making the box.
2. Apply glue to the tab on Part A and align to the area indicated on Part B. When the glue has dried, fold along the dotted lines.
3. Apply glue to the remaining tab and secure to the open side of the box. Let the glue dry and then fold in the bottom flaps and secure with glue or tape.



Disney
**HOCUS
POCUS**

The Anniversary Edition of *Hocus Pocus* is here to put a spell on you! Watch this Halloween classic in two different ways (including Trivia and Treats Mode) today.

Part B

Apply glue to this tab to make the box.



MARY

© Disney



Disney
HOCUS
POCUS

D23
The Official Disney Fan Club

Glue Part A to Part B Here

